



# LUNIGIANA 2000

## real estate

**Ref. 610A**



LUNIGIANA2000  
real estate

**Lunigiana2000 - Real Estate in Tuscany**

**Italy, 54021 Bagnone (MS) - Piazza Roma, 2 - Ph. +39 0187421400 | Mob. +39 3355383266**

**[www.lunigiana2000.com](http://www.lunigiana2000.com) - [english.info@lunigiana2000.com](mailto:english.info@lunigiana2000.com)**

## Typical stone semi-detached house



### DESCRIPTION

Typical **stone semi-detached stone house** with panoramic **terrace** set in a charming hamlet, just approximately 6 km far from facilities.

The property, divided into two units, consist of:

Th A unit, recently restored (new roof) and requiring finishing, comprises:

- room which can be a living room with open plan kitchen and bathroom on ground floor;
- another room that can be a bedroom and bathroo on first floor.

B unit, which is already habitable, comprises:

- terrace, dining room with open plan kitchen, double bedroom, hall and bathroom with shower on ground floor;
- cellar on lower ground floor.

**Central heating (heat pump).**

It is possible to park the car at the public parking which is approx. 100 metres far from the house.

**TECHNICAL DETAILS**

Internal surface

80 sqm

External surface

120 sqm

Noise Level

0 - very silent area

Floors

2

Rooms

4

Bedrooms

2

Bathrooms

1

Cellar

20 sqm

Terrace

Yes

Altitude a.s.l.

450

Status

Habitable

Heating

Conditioner

Panoramic view

Yes

**Category**

G



**Lunigiana2000 - Real Estate in Tuscany**

**Italy, 54021 Bagnone (MS) - Piazza Roma, 2 - Ph. +39 0187421400 | Mob. +39 3355383266**

**[www.lunigiana2000.com](http://www.lunigiana2000.com) - [english.info@lunigiana2000.com](mailto:english.info@lunigiana2000.com)**

MESSAGES.PROPERTY\_IMAGES





  
**LUNIGIANA2000**  
real estate

**Lunigiana2000 - Real Estate in Tuscany**

**Italy, 54021 Bagnone (MS) - Piazza Roma, 2 - Ph. +39 0187421400 | Mob. +39 3355383266**  
**[www.lunigiana2000.com](http://www.lunigiana2000.com) - [english.info@lunigiana2000.com](mailto:english.info@lunigiana2000.com)**



**Lunigiana2000 - Real Estate in Tuscany**  
**Italy, 54021 Bagnone (MS) - Piazza Roma, 2 - Ph. +39 0187421400 | Mob. +39 3355383266**  
**[www.lunigiana2000.com](http://www.lunigiana2000.com) - [english.info@lunigiana2000.com](mailto:english.info@lunigiana2000.com)**



**Lunigiana2000 - Real Estate in Tuscany**  
**Italy, 54021 Bagnone (MS) - Piazza Roma, 2 - Ph. +39 0187421400 | Mob. +39 3355383266**  
**[www.lunigiana2000.com](http://www.lunigiana2000.com) - [english.info@lunigiana2000.com](mailto:english.info@lunigiana2000.com)**







  
**LUNIGIANA2000**  
real estate

**Lunigiana2000 - Real Estate in Tuscany**

**Italy, 54021 Bagnone (MS) - Piazza Roma, 2 - Ph. +39 0187421400 | Mob. +39 3355383266**  
**[www.lunigiana2000.com](http://www.lunigiana2000.com) - [english.info@lunigiana2000.com](mailto:english.info@lunigiana2000.com)**

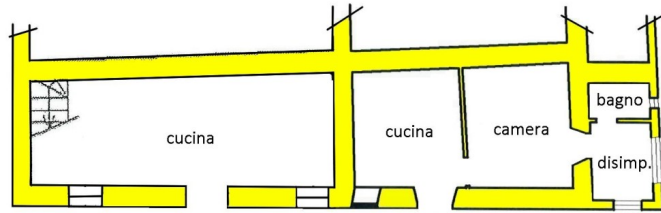
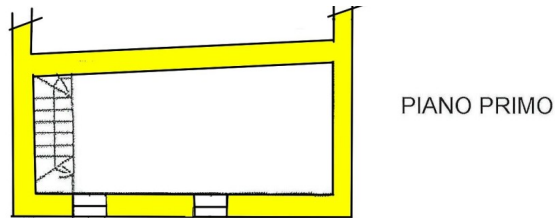




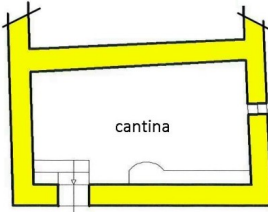
**Lunigiana2000 - Real Estate in Tuscany**  
Italy, 54021 Bagnone (MS) - Piazza Roma, 2 - Ph. +39 0187421400 | Mob. +39 3355383266  
[www.lunigiana2000.com](http://www.lunigiana2000.com) - [english.info@lunigiana2000.com](mailto:english.info@lunigiana2000.com)



**Lunigiana2000 - Real Estate in Tuscany**  
Italy, 54021 Bagnone (MS) - Piazza Roma, 2 - Ph. +39 0187421400 | Mob. +39 3355383266  
[www.lunigiana2000.com](http://www.lunigiana2000.com) - [english.info@lunigiana2000.com](mailto:english.info@lunigiana2000.com)



PIANO TERRA



PIANO SEMINT.

LUNIGIANA 2000  
real estate



LUNIGIANA 2000  
real estate



**Lunigiana2000 - Real Estate in Tuscany**

**Italy, 54021 Bagnone (MS) - Piazza Roma, 2 - Ph. +39 0187421400 | Mob. +39 3355383266**

**www.lunigiana2000.com - english.info@lunigiana2000.com**