



# LUNIGIANA 2000

## real estate

**Ref. 257**



**Lunigiana2000 - Real Estate in Tuscany**

**Italy, 54021 Bagnone (MS) - Piazza Roma, 2 - Ph. +39 0187421400 | Mob. +39 3355383266**  
**[www.lunigiana2000.com](http://www.lunigiana2000.com) - [english.info@lunigiana2000.com](mailto:english.info@lunigiana2000.com)**

## Stone house



### DESCRIPTION

**Stone house** (190 sq m) set in an hillside village with local shops, restaurants, railway station and bar.

The property comprises:

- 3 cellars and boiler room on ground floor;
- **terrace**, entrance hall, living room with fireplace, bedroom, bathroom with shower, dining room and kitchen on first floor;
- two attic bedrooms, loft study and bathroom with bath on second floor.

**Central heating (oil).**

**The sale includes furniture.**

**TECHNICAL DETAILS**

Internal surface

160 sqm

External surface

190 sqm

Noise Level

1 - silent area

Floors

2

Rooms

8

Bedrooms

3

Bathrooms

2

Cellar

75 sqm

Terrace

4 sqm

Altitude a.s.l.

350

Status

Restored

Heating

Autonomo a gasolio

Panoramic view

Yes

Furnished

Yes

**Category**

G



**Lunigiana2000 - Real Estate in Tuscany**

**Italy, 54021 Bagnone (MS) - Piazza Roma, 2 - Ph. +39 0187421400 | Mob. +39 3355383266**

**[www.lunigiana2000.com](http://www.lunigiana2000.com) - [english.info@lunigiana2000.com](mailto:english.info@lunigiana2000.com)**

MESSAGES.PROPERTY\_IMAGES





  
**LUNIGIANA2000**  
real estate

**Lunigiana2000 - Real Estate in Tuscany**

**Italy, 54021 Bagnone (MS) - Piazza Roma, 2 - Ph. +39 0187421400 | Mob. +39 3355383266**  
**[www.lunigiana2000.com](http://www.lunigiana2000.com) - [english.info@lunigiana2000.com](mailto:english.info@lunigiana2000.com)**



**Lunigiana2000 - Real Estate in Tuscany**  
Italy, 54021 Bagnone (MS) - Piazza Roma, 2 - Ph. +39 0187421400 | Mob. +39 3355383266  
[www.lunigiana2000.com](http://www.lunigiana2000.com) - [english.info@lunigiana2000.com](mailto:english.info@lunigiana2000.com)



  
LUNIGIANA2000  
real estate

**Lunigiana2000 - Real Estate in Tuscany**

**Italy, 54021 Bagnone (MS) - Piazza Roma, 2 - Ph. +39 0187421400 | Mob. +39 3355383266**  
**[www.lunigiana2000.com](http://www.lunigiana2000.com) - [english.info@lunigiana2000.com](mailto:english.info@lunigiana2000.com)**



  
**LUNIGIANA2000**  
real estate

**Lunigiana2000 - Real Estate in Tuscany**

**Italy, 54021 Bagnone (MS) - Piazza Roma, 2 - Ph. +39 0187421400 | Mob. +39 3355383266**  
**[www.lunigiana2000.com](http://www.lunigiana2000.com) - [english.info@lunigiana2000.com](mailto:english.info@lunigiana2000.com)**





  
LUNIGIANA2000  
real estate

**Lunigiana2000 - Real Estate in Tuscany**

**Italy, 54021 Bagnone (MS) - Piazza Roma, 2 - Ph. +39 0187421400 | Mob. +39 3355383266**  
**[www.lunigiana2000.com](http://www.lunigiana2000.com) - [english.info@lunigiana2000.com](mailto:english.info@lunigiana2000.com)**



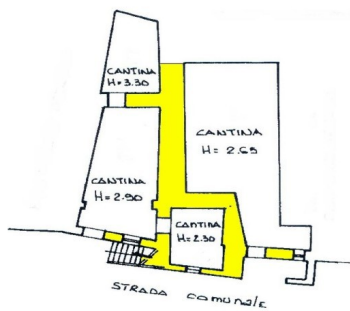
**Lunigiana2000 - Real Estate in Tuscany**  
**Italy, 54021 Bagnone (MS) - Piazza Roma, 2 - Ph. +39 0187421400 | Mob. +39 3355383266**  
**[www.lunigiana2000.com](http://www.lunigiana2000.com) - [english.info@lunigiana2000.com](mailto:english.info@lunigiana2000.com)**



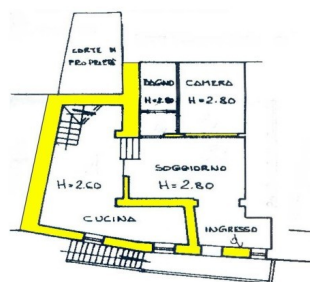
  
**LUNIGIANA2000**  
real estate

**Lunigiana2000 - Real Estate in Tuscany**

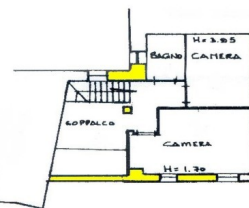
**Italy, 54021 Bagnone (MS) - Piazza Roma, 2 - Ph. +39 0187421400 | Mob. +39 3355383266**  
**[www.lunigiana2000.com](http://www.lunigiana2000.com) - [english.info@lunigiana2000.com](mailto:english.info@lunigiana2000.com)**



PIANO TERRA



PIANO PRIMO



PIANO SECONDO

