

LUNIGIANA 2000

real estate

Ref. 531



LUNIGIANA2000
real estate

Lunigiana2000 - Real Estate in Tuscany

Italy, 54021 Bagnone (MS) - Piazza Roma, 2 - Ph. +39 0187421400 | Mob. +39 3355383266

www.lunigiana2000.com - english.info@lunigiana2000.com

Typical country estate requiring renovation



DESCRIPTION

Typical country estate requiring renovation comprising main farmhouse of 190 sq m:

- 4 cellars, store room on ground floor;
- two flats on first floor;

detached house of 125 sq m:

- two cellars on ground floor;
- a flat to be finished on first floor and **5 hectares of land**.

The property is conveniently situated in the countryside very close to a town with shops and facilities.

TECHNICAL DETAILS

Internal surface
315 sqm
External surface
436 sqm
Floors
2
Rooms
17
Bedrooms
3
Bathrooms
2
Ground
52525 sqm
Cellar
Yes
Parking place
5 sqm
Terrace
Yes
Porch
Yes
Altitude a.s.l.
100
Energy class
535.75 Kw/h sqm
Status
New buildings
Heating
Autonomo a gas propano
Panoramic view
Yes

Category

G



MESSAGES.PROPERTY_IMAGES









Lunigiana2000 - Real Estate in Tuscany
Italy, 54021 Bagnone (MS) - Piazza Roma, 2 - Ph. +39 0187421400 | Mob. +39 3355383266
www.lunigiana2000.com - english.info@lunigiana2000.com

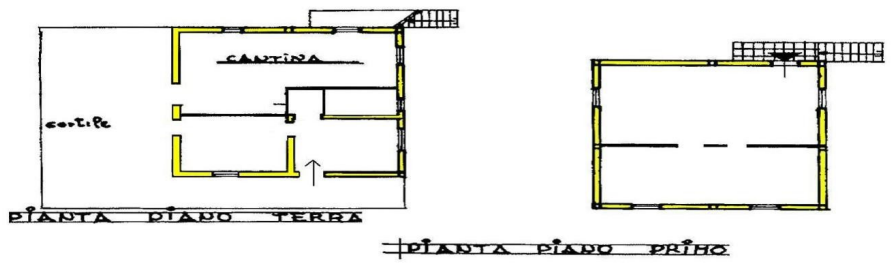
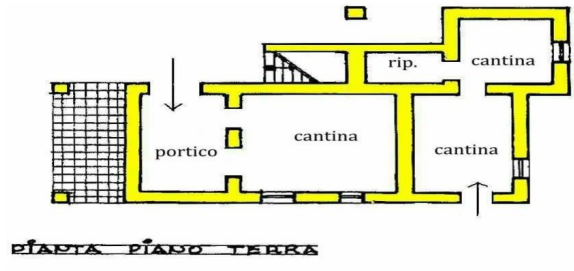
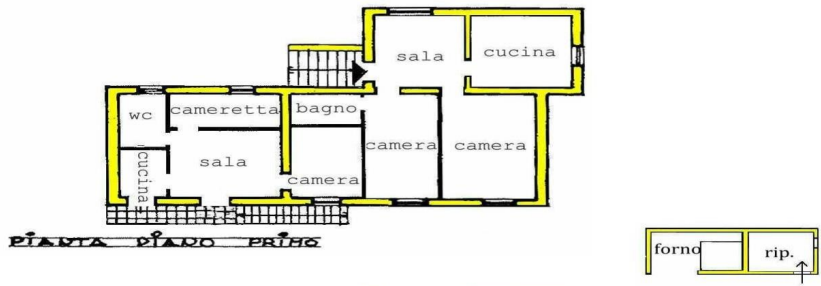


Lunigiana2000 - Real Estate in Tuscany

**Italy, 54021 Bagnone (MS) - Piazza Roma, 2 - Ph. +39 0187421400 | Mob. +39 3355383266
www.lunigiana2000.com - english.info@lunigiana2000.com**



Lunigiana2000 - Real Estate in Tuscany
Italy, 54021 Bagnone (MS) - Piazza Roma, 2 - Ph. +39 0187421400 | Mob. +39 3355383266
www.lunigiana2000.com - english.info@lunigiana2000.com



LUNIGIANA 2000
real estate

LUNIGIANA 2000
real estate

